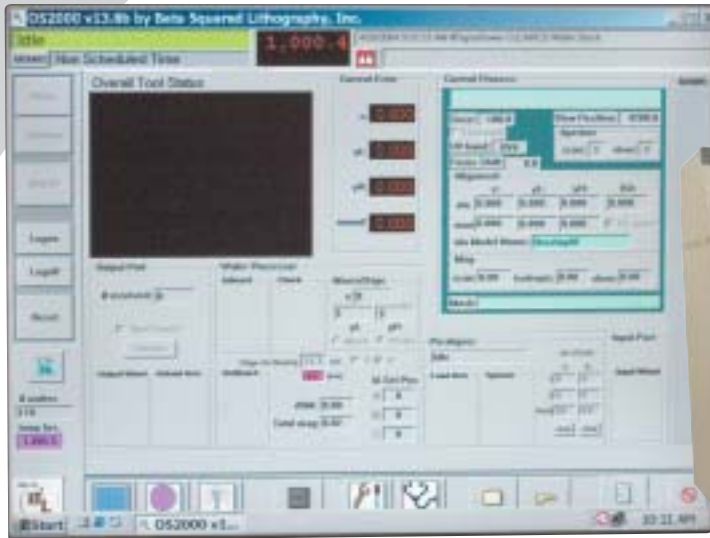


OS2000 Control System With Load & Go™

Micralign™ 5/6/700 Control System Replacement



► Overview

The OS2000 is a complete replacement of the control system in the ASML/SVGL (Perkin-Elmer) Micralign™ 5/6/700-series micro-lithography tools. The current OS, AFA, Sequencer, SEMI, and AIM computer and software systems are replaced by a single Windows™-based object-oriented computer and software control system.

► Features

- LCD/Touch Screen User Interface
- Windows™-based Industrial Computer
- New AFA System with full-field CCD camera
- AFA Auto-Contrast Control, wafer-to-wafer
- Automatic Processing Loading
- Pre-Process Checking
- Smart Focus™
- 1st Level IA Limit
- Auto IA Set
- IA -> Prealigner Feedback Loop (thru-put)
- Sensor Timeout Dialogs
- Active 'Watch-Dog' Limit Checking
- Preventative Maintenance Wizards
- Data Logging (Error, History, Uniformity, Overlay, Focus, Session, and Wafer Logs)
- SEMI-GEM E30/E37/E587 Host Link
- Flexible software allows; quick modifications for custom applications, easy version upgrade (non prom-based)



Beta Squared Lithography, Inc.

OS2000 Control System With Load & Go™

Micralign™ 5/6/700 Control System Replacement

► Benefits

Increased throughput

- ◆ Increased capacity; all levels NOW Automatic
- ◆ Decreased setup time
 - Mask and Wafer stages go to last setup position
 - Parameter setting via download is faster than manual entry
 - Scan Arms are positioned automatically

Decreased Rework

- ◆ Decreased mis-processing
 - Process checking prior to processing
 - Focus System eliminates hitting the wafer with nozzles with Smart Focus™
 - Carriage Balance check to prevent banding
- ◆ Decreased mis-alignment
 - Tighter alignments on the tougher levels and fewer mis-alignments due to full field CCD

Decreased Downtime

- ◆ Increased MTBF
 - COTS components and fewer components
 - Prealigner software prevents flexure breakage (similar to M700)
 - Prealigner/IA feedback prevents wafer stage flexure breakage
 - Actuator/Sensor failure reports help prevent catastrophic failures
 - Joystick check at Process start to prevent lockup at Viewing
 - Carriage Balance check to prevent overloading A201 PCB

- ◆ Decreased Scheduled Downtime
 - Mask Load position and uniformity hold flag software adjustable
 - Focus Matrix & Adjustment (no calculations and/or mistakes)
 - Overlay & Adjustment (no calculations and/or mistakes)
 - Uniformity/Exposure Meter & Adjustment (no calculations and/or mistakes)
- ◆ Increased MTBA
 - Retries avoid assists from Operators
- ◆ Decreased MTTR
 - No more sequencer listing required when machine stops and doesn't say what's wrong
 - Easier, faster repair & diagnostic procedures, (I/O screen with everything available, point and click)
- ◆ Decreased Costs
 - Lowered Repair Costs through use of COTS components
 - Lowered training costs due to User-Friendly Windows interface

► Physical Specifications

Dimensions: 21" W x 13" H x 21" D

Power: 120V or 240V, 50/60Hz 200 watts

Weight: 55 lbs/22 Kg

Beta Squared Lithography specifications subject to change without notification.



Beta Squared Lithography, Inc.

940 Federal Road • Brookfield, CT 06804 • Phone: 203.775.4242 • Fax: 203.775.1337
www.betaSquaredLithography.com • sales@beta2L.com